

Converge MidAmerica **Vision Report**

2019

Converge MidAmerica
924 Busse Highway
Park Ridge, IL 60068

847.692.4125
info@convergemidamerica.org
convergemidamerica.org





Who is Converge MidAmerica

A MESSAGE FROM THE PRESIDENT

Converge MidAmerica started as a mission to reach the vast number of immigrants coming to the United States in the 1850s. This new mission movement turned into a family of churches.

This family started working together to reach more communities with the love of Jesus by pooling their money together to hire what were affectionately known as state missionaries. These missionaries traveled throughout the region planting new churches and bringing encouragement to a growing number of partner churches in their area.

Today Converge MidAmerica is a multi-ethnic and multi-cultural mission that still operates like those regional missionaries. In the last 20 years it has expanded its reach from 86 churches across four states to over 242 churches across eight states reaching 10 language groups. This unprecedented growth means that more and more men, women and children are being touched by the gospel of hope and the love of Jesus.

And yet the real heroes in this God story are you: the pastors, staff and lay leaders from our family of churches that support, sacrifice and partner with us as we together

fulfill our 167-year-old vision of starting and strengthening churches.

This vision report reflects the cooperative efforts of our churches over the last two ministry years. My prayer is that it stirs your heart with thanksgiving and emboldens your prayers to trust God for more than we can ask or imagine!

“Now to him who is able to do immeasurably more than all we ask or imagine, according to his power that is at work within us, to him be glory in the church and in Christ Jesus throughout all generations, for ever and ever! Amen” (Ephesians 3:20-21).

Sincerely,

A handwritten signature in black ink, appearing to read 'Gary Rohrmayer'.

Gary Rohrmayer
President
Converge MidAmerica

Converge MidAmerica


BY THE NUMBERS

89 
churches
planted
since 2010

46 churches 
have **joined** Converge
since 2010

 **40%** of our churches
are **cultural**
or **ethnic**


1500+ HOURS
OF COACHING
AND CONSULTING
PASTORS

 **55,000+** attendees
in **242** churches
across **8** states

 **1284** CHURCHES PLANTED
IN **NEPAL** AND **INDIA**

1073 COMPASSION CHILDREN 
SPONSORED THROUGH CONVERGE CHURCHES


TEN LANGUAGE
GROUPS being reached


15 CAPITAL
CAMPAIGNS
TOTALING \$17M+

 our budget
51% church planting
38% church strengthening
11% administration & fundraising

Church Planting

DANNY PARMELEE,
VICE PRESIDENT OF
CHURCH PLANTING

The Lord continues to provide quality church planters for our movement. We believe there is a unique mix of spiritual gifting and a clear calling required to plant a church. So while we have a continued stream of people who are interested in planting a church, we go through a rigorous process to help those interested to discern if church planting truly is the next step they should take. With their best interest in mind and for the sake of the Kingdom we have to tell a lot of people "no." We also have the privilege to affirm and confirm the calling of a select few. Our ultimate responsibility as a movement is to come alongside these planters and help them fulfill the call God has placed on their lives. Each planting couple, each community they are reaching and each strategy they envision is unique. We praise God for the sacrifice of each of these planters as they reach new Kingdom territory. If you know of potential church planters, send them our way so we can help them discern this call. Finally, thank you for being part of a movement that gives sacrificially so that these new works can reach their communities for Christ.

Why plant a church?

Every year, more than **4,000** churches in the U.S. **close their doors**.

More than **24 million** people in our MidAmerica region **don't attend church**.

59% of Millennials raised in a church have **dropped out**.

A new church gains **60-80%** of its membership from **new conversions**.

Church plants **increase** in attendance by an average of **21%** in the first 5 years.

9 out of 10 Converge church plants are **successful**.

record number of **New Church Planters**



**CORY & BRITTANY
BALL**
KIRKWOOD, MO



**DANNY & IBETH
FLORES**
ELGIN, IL



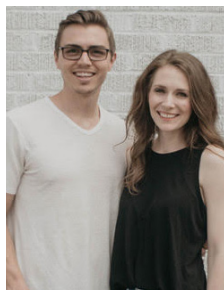
**GREG & KEYONNA
PAYTON**
CHICAGO, IL



**BADR & ELSY AFIF
RHOMRI**
SKOKIE, IL



**KODY & JESSICA
WOODARD**
GALLATIN, TN



**GREG & KATE
MCKINNEY**
KANSAS CITY, MO



**BRADY & ASHLEY
GRAY**
BARDSTOWN, KY



BOB & ERIN HEDGE
CHICAGO, IL



**JOSH & CHERI
GUTTERIDGE**
CHICAGO, IL



**CHARLEY &
NICHOLE DEVER**
KNOXVILLE, TN



**JOSEPH & MARIA
TAYLOR**
CHICAGO, IL



**NICK & HANNAH
BRZOZOWSKI**
CHAMPAIGN, IL



**PHILIP & BETSY
BARR**
KNOXVILLE, TN



**GREG & KRISTAL
ARMSTRONG**
LOMBARD, IL



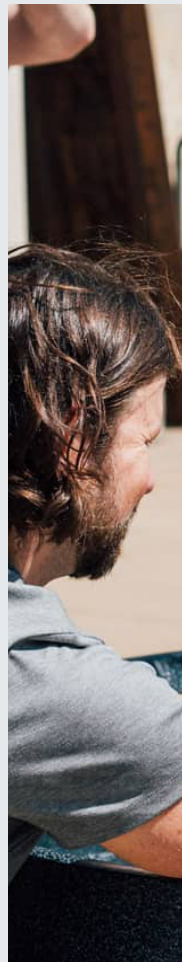
**GETACHEW &
REBIKA TEGEGNE**
INDIANAPOLIS, IN

Church Strengthening

BRYAN MOAK,
VICE PRESIDENT OF
CHURCH STRENGTHENING

This year I did something I have never done before: I helped a church close its doors. Over 60 years of ministry done in one day. The good news is that there will be another evangelical church meeting there shortly. But it was still very sad. One of things the leadership of the church said to me was, “If only we would have taken our need to revitalize our church seriously 10 years earlier.” This experience has made me only more passionate about seeing our churches become all they have been called to be.

The great news is that it is happening. We have a church on the far south side of Chicago seeing God create renewed health and vitality that hasn’t been seen in over a generation. We have a church in the St. Louis area that is talking about needing to move to two services very soon. This was a conversation that wouldn’t even have been on the radar a few years ago. We have a church in Michigan that is defying all the odds and growing like crazy, even starting a new campus two years ago. The main campus is 20 minutes from the nearest town! I could go on and on. All this firms up our resolve to help see our churches increasingly become strong, healthy, gospel saturated and multiplying communities.





21 churches 
in church health assessments
(NCD and Church Unique Assessment Processes)

 **39** couples at
FOUR Compass gatherings


55 PASTORS
9 TOGETHER GROUPS



5

prayer first
weekends



69
PASTORS OR FAMILIES
RECEIVING COUNSELING THROUGH
MINISTER'S ASSISTANCE PROGRAM


SEVEN pastors placed

EIGHT ongoing searches

200+ churches
nationwide participating
in 21 days of prayer

We desire to start 10 churches overseas for every one church we start in Converge MidAmerica.

GARY ROHRMAYER

A few years ago I was standing in an orphanage in Haiti with other Converge pastors when God touched my heart in a significant way with this question: “What are you doing to help the poor in this world?” From that point on, I chose to get personally engaged and use the platform God gave me to call our pastors and churches to address the needs of the poor and the unreached around the world. Scripture teaches us, “Whoever oppresses the poor shows contempt for their Maker, but whoever is kind to the needy honors God” (Proverbs 14:31).

Over the last four years we have taken 12 pastors on two trips with Compassion International, a child sponsorship organization started out of a Converge church on the west side of Chicago in the late 1940s that is now impacting over 1.8 million children worldwide. To date, over 1083 children have been sponsored by Converge MidAmerica families to help overcome extreme poverty in our world. In the next ten years, if every Converge MidAmerica church hosted just one Compassion Sunday, we could easily impact the lives of over 30,000 children. And for every child that is rescued from extreme poverty, 12 other people are impacted. The Apostle James wrote, “Religion that God our Father accepts as pure and faultless is this: to look after orphans and widows in their distress and to keep

oneself from being polluted by the world” (James 1:27).

Over the last four years, Converge MidAmerica has sponsored and participated in vision trips with some of our mission partners. We have taken 12 pastors on three trips with The Timothy Initiative, a church planting organization with Converge that has planted over 50,000 churches in the 10/40 Window. For \$333, we can start a new church, train its pastor and impact the poor, the orphaned and victims of sex trafficking. To date, Converge MidAmerica churches have given \$427,572 to see 1284 churches started in Nepal and Northern India.

Every time I go on a vision trip my heart is broken, my faith is challenged and my prayers are embolden for the poor, helpless and unreached peoples of the world.





Compassion International + The Timothy Initiative

1083

CHILDREN
sponsored by
Converge churches
through Compassion
International

\$333

TO START
a new church, train its
pastor and impact its
community

1.8M

CHILDREN
impacted worldwide
by Compassion
International

1284

CHURCHES
started in Nepal
and Northern India,
totaling \$427,572
through the Timothy
Initiative



Supporting Pastors' Families

We are devoted to caring for our pastors and their families.

A survey by Christianity Today reported that 90 percent of pastors' wives responded that they enjoy or are happy in their role as a pastor's wife. They also reported that "the single biggest problem facing pastors' wives is that of friendship. Fifty-six percent said they do not have close friends in the church. For some (28 percent), this is intentional."

To help with that reality, Converge MidAmerica offers the following support, mentoring and gatherings to encourage our pastors' wives in their unique role and to foster friendships outside of their church.

One-on-One Care: Mary Rohrmayer spends countless hours meeting one-on-one with any pastor's wife in our region. This is confidential and happens face-to-face as well as phone calls, texting and emails.

Minister's Assistance Program (MAP): We are pleased to offer a counseling referral program to our pastors and their families. All full-time pastors, pastoral staff, spouses and

children (college age and under) are eligible to receive nine sessions per calendar year with one of our qualified counselors. Each session requires a \$25 co-payment paid directly to the counselor by the pastor or family member. In the past year, 69 pastors and families have utilized MAP, totaling \$22,800+ spent towards mental health.

Leading & Loving It Groups: We offer help in getting connected with a wider range of pastors' wives via Leading and Loving It Ministries. This group helps pastors' wives connect via video calls with others that are in the same season of ministry.

Regional Area Dinners: We have special Regional Area Dinner gatherings with pastors and wives to create an opportunity to connect with other pastors' wives and for us to show love and appreciation for our ministry couples.

Pastors & Wives Retreat: Biennially, Converge MidAmerica greatly subsidizes the Pastors & Wives Retreat to provide a getaway in a beautiful setting for Converge ministry couples to rest, enjoy a top-notch speaker and

connect with other couples from our region. During our Fall 2018 retreat, 62 couples took advantage of this wonderful opportunity!

Connect: At our biennial Connect Conference, we offer several breakout sessions just for pastors' wives. These are designed specifically to provide insight and encouragement for them as well as to make introductions with other pastors' wives to encourage new and ongoing relationships.

Monthly Newsletter: We send out a monthly email newsletter called Encouragement for Ministry Wives that goes out to over 400 pastors' wives.

HIGHLIGHTS

62 couples
at 2018 Pastors and
Wives retreat

\$57,500+
spent toward mental health
through MAP in 2018 and 2019

3 workshops
at Connect 2019
especially for pastors' wives



Visit convergemidamerica.org/pastors-wives to learn more about any of these programs.

Center Lake Bible Camp



TIM WOELKERS,
INTERIM CAMP DIRECTOR

Center Lake Bible Camp continues to provide quality camping experiences for guests of all ages. The past two years have provided many opportunities to serve our campers, community and retreat guests.

Our summer camps allow us to create a temporary community where young people are able to encounter God in a way that is hard to do in their "normal."

Year round, our facility is used by church, school and secular groups of all ages for weekend retreats, day events and community programs such as our live nativity "Follow the Star" where more than 2500 people heard the true story of Christmas.

SUMMERS 2018-2019

1450+ Campers

100+ Volunteers

44 Summer Staff

65 Summer Ministry Teams
(highschool volunteers)

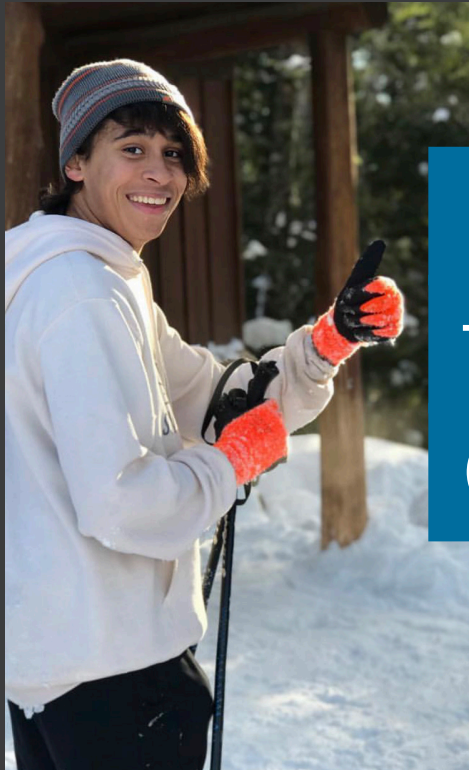
1100 Rental Group Guests

Hundreds of Spiritual
Decisions

RETREAT SEASONS 2017-2019

3700 School Group Guests

5000+ Guests Served



Empowering the **Next** Generation

IN 2019

160 students at Jr. High School Michigan ***Frost Bite***

112 students at High School Michigan ***Fire and Ice***

179 students at Jr. High School ***Snow Daze*** in Illinois

202 students at High School ***Snow Blast*** in Wisconsin

10+ youth workers in ***coaching*** or ***mentoring*** relationships

Births and ***marriages*** celebrated

Small group trainings, retreat days, and one-on-one coaching ***throughout*** the ***year***





HISPANIC MINISTRIES

JESSE PADILLA, DIRECTOR

Hispanics in the USA are the **largest and fastest growing community**, and they have the greatest need to know the gospel. One of the challenges we are facing in our churches today is that we don't have enough workers for this task. Our vision is to continue working with the existing churches and finding ways to inspire new planters.

Some of our work with existing churches includes special training for pastors and leaders, a Christmas celebration with all churches, youth camps, women's conferences and more. We have **two lead teams** that meet twice a month, one in English and the other in Spanish. We help and support churches and their pastors by providing resources, coaching and training.

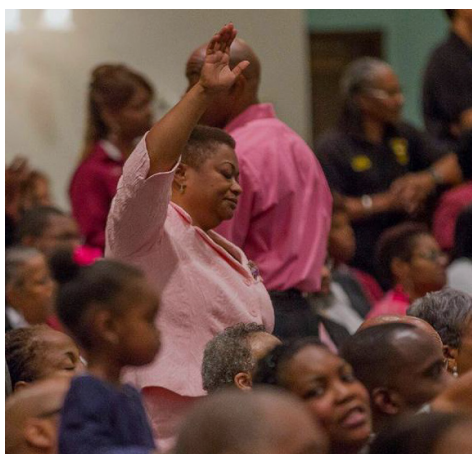


This year **72 leaders** from our churches are continuing a three-year training program called "Biblical Counseling," our annual women's conference had almost **two hundred participants** and more than **200 kids** enjoyed our summer camps.

Ignite is a program where various couples from different churches attend a 13-month training (in English) to discover and train potential leaders and church planters. Having graduated Ignite, these **40+ couples** are better leaders, parents and spouses; we believe the best is yet to come.

All of this is the result of teamwork. There are so many people involved that I can't mention all their names, but I'm grateful for all of them.

I'm aware and confident that God is the only one who can do a perfect work in my person, in a church or in the entire nation. This is why I ask you to join me in prayer, that by his power, all we do in his name prospers and brings glory to his name (Philippians 1:6).



AFRICAN AMERICAN MINISTRY HIGHLIGHTS

The **largest church** in Converge MidAmerica is an African American church: Eastern Star Church in Indianapolis, IN.

Currently we have **46** churches of African descent, **seven** of which are church plants.

Over the last two years **five churches** joined Converge MidAmerica.

Our African American **Summit** featured Dr. John Jerkins in 2018 and Dr. Bobby Manning in 2019.



AFRICAN AMERICAN MINISTRIES

DR. WINIFRED OBLETON, DIRECTOR

I feel that we're only beginning to scratch the surface in terms of what God wants to do in and through the African American Ministries. Over the last three years I have discovered that there are unimaginable gifts and abilities within the Converge African American churches.

On a personal note, we are most grateful to Pastor Rod Walker, who was larger than life, and his incredible contributions to Converge. His presence will be greatly missed.



Frequently Asked Questions

Who is Converge MidAmerica?

Converge is a missional network of gospel driven churches, and we at Converge MidAmerica are one of 11 regional missional arms of our partner churches. For 167 years, we have served as ‘state missionaries’ who coordinated regional church planting and ethnic work. Today we are not only active in starting new churches, but are fully engaged in strengthening our partner churches through consulting, training and coaching. We are committed to starting and strengthening churches that will impact the world with the message of Jesus. We are fully engaged in supporting pastors’ families as well as sponsoring vision trips to help our churches touch the world.

How Does Funding Work?

We live at the will and the funding of our partner churches, making us financially dependent on our churches to assist with the staffing and ministry programs we provide. Because of this, we recommend the following funding structures for our churches:

- 3% of church budget for Converge MidAmerica
- 1% of church budget for Converge Worldwide

The rationale for these percentages is that

Converge Worldwide has access to all of the churches in Converge, while Converge MidAmerica only has access to the churches in our region. It is our hope that our churches will also generously support regional church planters, international missionaries, benevolence and world relief projects.

What is the Relationship Between Converge Worldwide and Converge MidAmerica?

Converge Worldwide has a national and international focus, deploying international missionaries and establishing national and international partnerships. Converge Worldwide provides international and national disaster relief programs, national chaplaincy program, Converge Retirement Plan and Converge Cornerstone Fund for church loans and investments.

Converge MidAmerica has a local and regional focus, deploying regional missionaries and church planters and establishing regional partnerships. Converge MidAmerica provides pastoral care, regional fundraising, pastoral placement and interim services, local church consulting and coaching and global vision trips for pastors and key leaders.

Converge MidAmerica
924 Busse Highway
Park Ridge, IL 60068

847.692.4125
info@convergemidamerica.org
convergemidamerica.org

